



This great walk starts at the Sphinx Memorial and loops around via Cowan Creek, exploring diverse environments as it changes altitude. There is an optional side trip to the Empire Marina and cafe for a recharge before the climb back up to the Sphinx. This walk provides some great water views of the Cowan Creek and the interesting rock formations along its shores.

Ku-ring-gai Chase National Park

Length: 9.1 km
Time: 4 hrs
Climb: 486 m
Style: Circuit
Rating: Track: Moderate
Where: 5.4 km NNE of Turramurra
Transport: bus car



Visit www.wildwalks.com for more info



Side trips and Alternate routes mentioned in these notes are not included in the tracks overall rating, distance or time estimate. The notes only describe the side trips and Alternate routes in one direction. Allow extra time for resting and exploring areas of interest. Please ensure you and your group are well prepared and equipped for all possible hazards and delays. The authors, staff and owners of wildwalks take care in preparing these notes but will not accept responsibility for any inconvenience, loss or injury sustained by using these notes or maps. Please take care and share your experience through the website.



NSW National Parks and Wildlife Service

NPWS is a proud sponsor of Wildwalks.

For more information on the spectacular parks and reserves of NSW

Visit www.nationalparks.nsw.gov.au

Sphinx Memorial

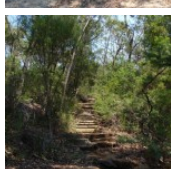
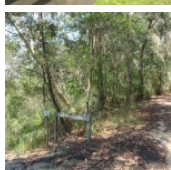
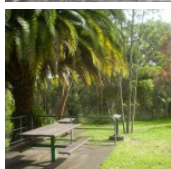
Private Shirley spent one and a half years carving this monument whilst a patient of the Lady Davidson Convalescent Hospital. William Shirley was in hospital, being treated after serving in WW1. Shirley died in 1929, leaving this memorial to fallen A.I.F. comrades.

"To my glorious comrades of the A.I.F

by the late W. Shirley

No 5756 Pte. 13th Battalion

Died 27th August 1928" [More info](#)



Sphinx Memorial to Int of Sphinx Memorial Track and Sphinx service trail 0.1km 1 mins

(From S) From the Sphinx memorial, this walk follows the asphalt trail heading down the hill and through the bush to the intersection with the Sphinx fire trail.

Int of Sphinx Memorial Track and Sphinx service trail to Int of Sphinx walking Track and Service trail 0km

(From 0.06 km) From the intersection, this walk heads south-east (with the asphalt path on the right) for about 15m until coming to an intersection with the bush track signposted as the 'Sphinx Track'.

Int of Sphinx walking Track and Service trail to Int of Sphinx walking and Warrimoo Tracks 0.9km 15 mins

(From 0.08 km) From the intersection, this walk follows the 'Sphinx Walking Track' arrow down the long hill using the wooden and rock steps, until crossing a small creek and flattening out. Along the flat, the track is a rough bush track, scattered with small boulders, and after about 150m it is possible to see out over Cowan Creek. After a short while, the track once again begins to descend steeply into the valley, winding down to the signposted intersection with the 'Warrimoo Track' just above the waterline.

Int of Sphinx walking and Warrimoo Tracks to Int of Warrimoo and Bobbin Head Tracks 3.4km 1 Hrs 30 mins

(From 0.98 km) From the intersection, this walk follows the 'Bobbin Head' arrow along the rocky track as it heads through the ferns, undulating gently while the keeping Cowan Creek to the right. In time, this walk comes to the intersection of the Sphinx Track, just as the boats at the wharf come into view. Along this section of the walk, there are many large rock features above the track on the left and on the other side of the creek.

Int of Warrimoo and Bobbin Head Tracks to Empire Marina 0.2km 4 mins **Optional Side Trip:**

(From 4.41 km) From the intersection, this walk heads towards the marina, keeping Cowan Creek on the right as it passes behind the docking stations and joins onto an asphalt path. This walk follows the path along the side of the long building, passing a few roller doors until it turns right, following the track markers through a short hallway to the wharf on the other side of the building.

Empire Marina - Galley Foods cafe

Empire Marina, in Ku-Ring-Gai Chase National Park, provides facilities and services for people on boats and on foot. The marina is home to "Galley Foods" cafe. The cafe provides a variety of food and is open from 8:30am to 5pm seven days. Lunch and breakfast mains average the \$12-14, with drinks and ice creams also available. Phone 9457 0477 [More info](#)

Learn & Share

www.wildwalks.com
 Bushwalking and camping



Int of Warrimoo and Bobbin Head Tracks to int. near gate on Bobbin Head trail 0.1km 5 mins

(From 4.41 km) From the intersection, this walk heads up the steps and along the bush track. Partway up, there is a fantastic view over Cockle Creek and the marina. The walk continues to an intersection with a management trail.



int. near gate on Bobbin head trail to Int of Bobbin Head and Sphinx service tracks 4.1km 1 Hrs 10 mins

(From 4.54 km) From the intersection, the track heads up the service trail. The trail zigzags all the way up the side of the valley through a series of hair pin bends then straightens out and continues up the hill to the large concrete water tank. From the water tank, the walk follows the service trail up the hill. The trail flattens out and continues for quite a distance through the bush, passing under power lines several times until reaching the signposted intersection with the Sphinx track service trail.



Int of Bobbin Head and Sphinx service tracks to Int of Sphinx Memorial Track and Sphinx service trail 0.4km 5 mins

(From 8.63 km) From the intersection, this walk heads south-east along the management trail. After about 100m, the trail passes an intersection with a rough track, and then begins to turn to the north and descend. Shortly after turning back to the east and flattening out, the track comes to an intersection with an asphalt path, and a 'Sphinx Walking Track' sign.



Int of Sphinx Memorial Track and Sphinx service trail to Sphinx Memorial 0.1km 1 mins

(From 9.01 km) From the intersection, the track follows the asphalt trail up the gentle hill for a short distance to the Sphinx Memorial.

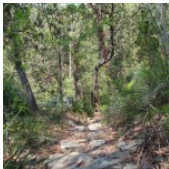


A list of paper topographical maps that cover this walk

[Hornsby](#) 1:25 000 Map Series

Ku-ring-gai Chase National Park Tourist Map 1:40 000 Map Series

Sydney 1:100 000 Map Series



Nearby outdoor and camping stores

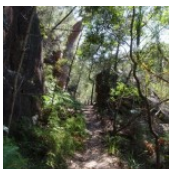
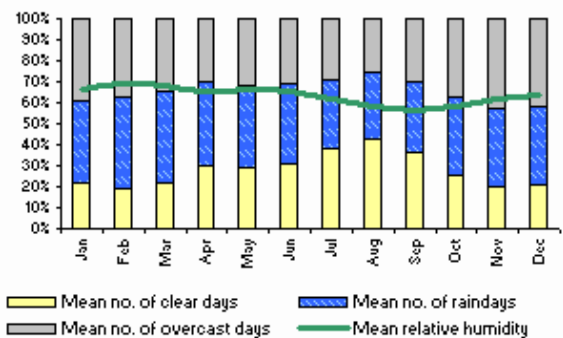
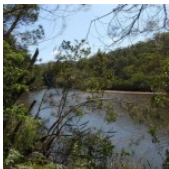
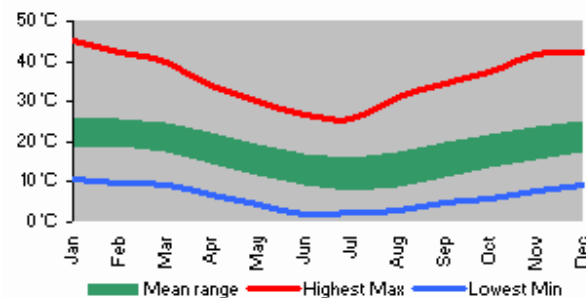
Kathmandu 236 Pacific Hwy (Westfield) Hornsby (02) 9476 1399

CampHikeClimb 20 George St Hornsby (02) 9476 5767

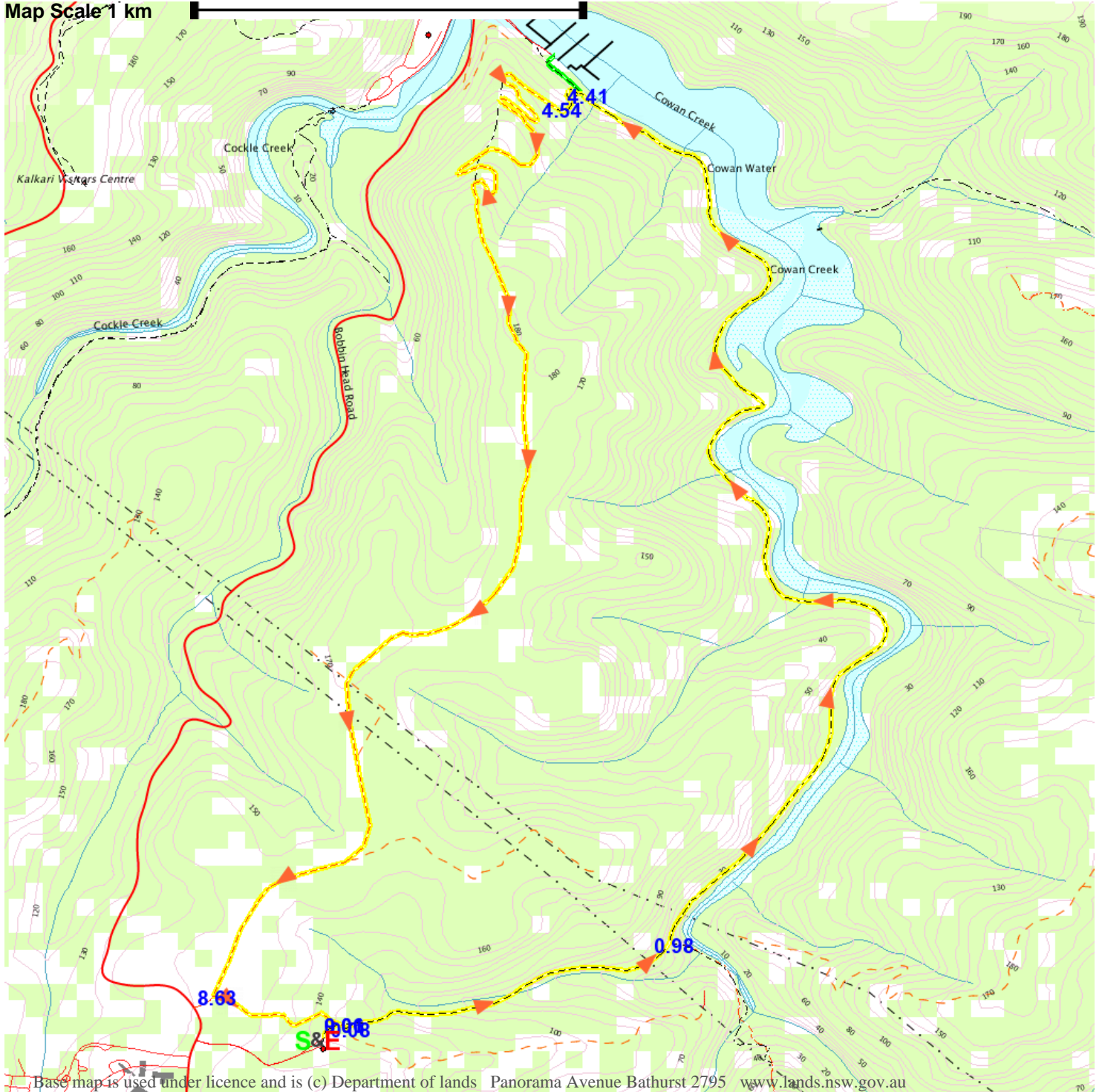
All Camping Supplies 12 Railway Pde Thornleigh (02) 9481 0473

Mountain Equipment 72 Archer St Chatswood (02) 9419 6955

Larry Adler Ski & Outdoor 77 Archer St Chatswood (02) 9412 4777



Map Scale 1 km



Base map is used under licence and is (c) Department of lands Panorama Avenue Bathurst 2795 www.lands.nsw.gov.au

